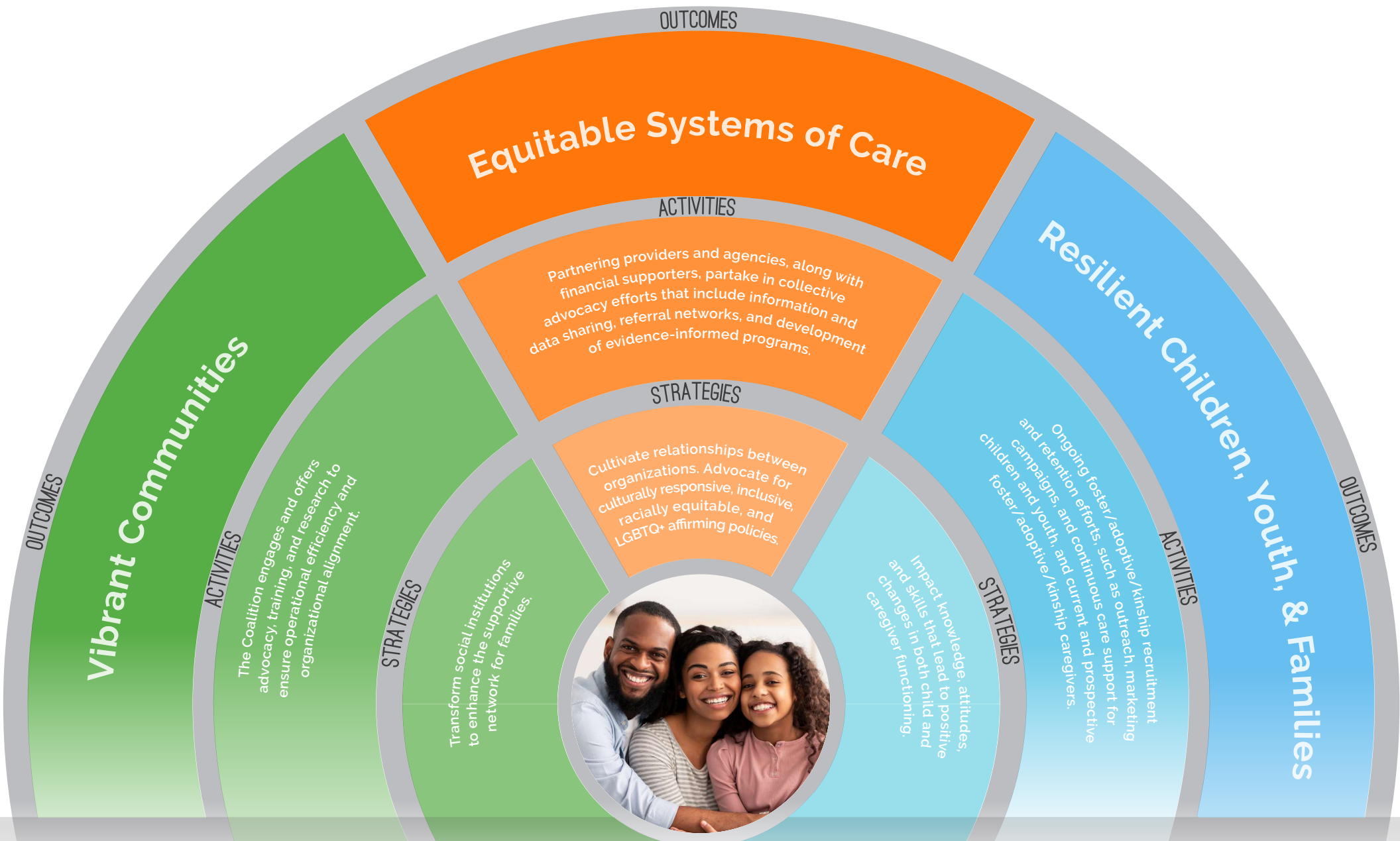


FOSTER & ADOPTIVE CARE COALITION THEORY OF CHANGE



VISION

"For every child...A Place to Call Home." The Coalition seeks to cultivate and facilitate the resiliency of children and youth impacted by the child welfare system by creating stability for families, improving their quality of life, and enhancing children and youths' natural support system and lifelong connections.

FOSTER & ADOPTIVE CARE COALITION

THEORY OF CHANGE



There are systemic gaps and barriers in permanency and stability for children and youth impacted by the child welfare system. The Coalition strives to eliminate these gaps and barriers through innovative programming that facilitates healthy, culturally competent, safe, and nurturing homes and communities for children and youth.

VISION

"For every child...A Place to Call Home." The Coalition seeks to cultivate and facilitate the resilience of children, youth, and families impacted by the child welfare system by:

- enhancing children and youths' natural support systems and lifelong connections
- creating stability for families
- improving their quality of life

KEY STAKEHOLDERS

The Coalition centers relationship building when engaging:

- children, youth, and families
- partnering child welfare agencies
- community resources
- financial supporters
- volunteers
- Coalition staff and governance

Teams across the Coalition's functional areas create and adopt an evidence-informed holistic approach when engaging our stakeholders throughout:

- outreach
- continuous supportive services
- referral networks
- advocacy
- training
- recruitment
- quality assurance
- research and publication

STRATEGIES

These relationships and engagement activities support the Coalition in efforts to:

- enhance supportive networks for children, youth, and families
- impact knowledge and attitudes about the child welfare system and the culture and diversity of families
- cultivate relationships between community and organizations
- advocate for racially, culturally responsive and LGBTQ+ affirming policies and practices
- transform social institutions

Our success is indicated by improved life outcomes for children and youth through:

- enhancing children and youths' natural support systems and lifelong connections
- cultivating resilient children, youth, and families
- creating stability and improving quality of life

VALUES

Equity • Family • Diversity
Innovation & Excellence
Inclusion • Integrity • Courage
Teamwork & Collaboration

ACTIVITIES

The Coalition implements both internally- and externally-focused activities that improve best practices and cultivate transformative partnerships to increase permanency and placement stability. The Coalition's programming focuses on:

- relationship building
- family finding and engagement
- foster/adoptive/kinship recruitment and retention
- culturally competent caregiver support and training
- knowledge acquisition
- information sharing
- operational alignment
- social and economic benefit

OUTCOMES

The Coalition cultivates trauma- and attachment- informed and culturally responsive families, organizations, and institutions which represent one of the most important indicators of impact and success: increased resiliency. The Coalition's external and internal programming ultimately creates:

- vibrant communities
- equitable systems of care
- resilient children, youth, and families
- transformed social institutions